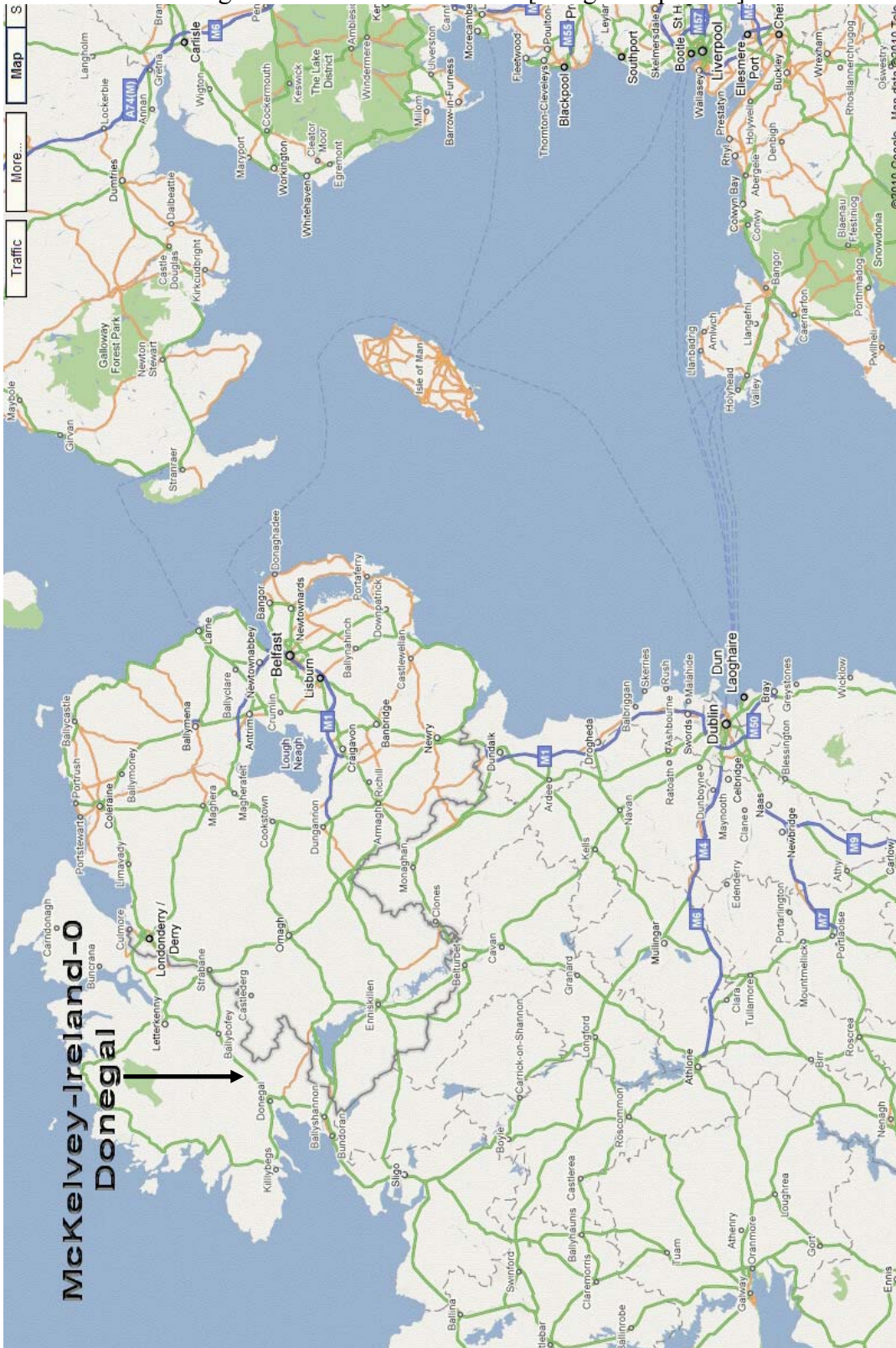


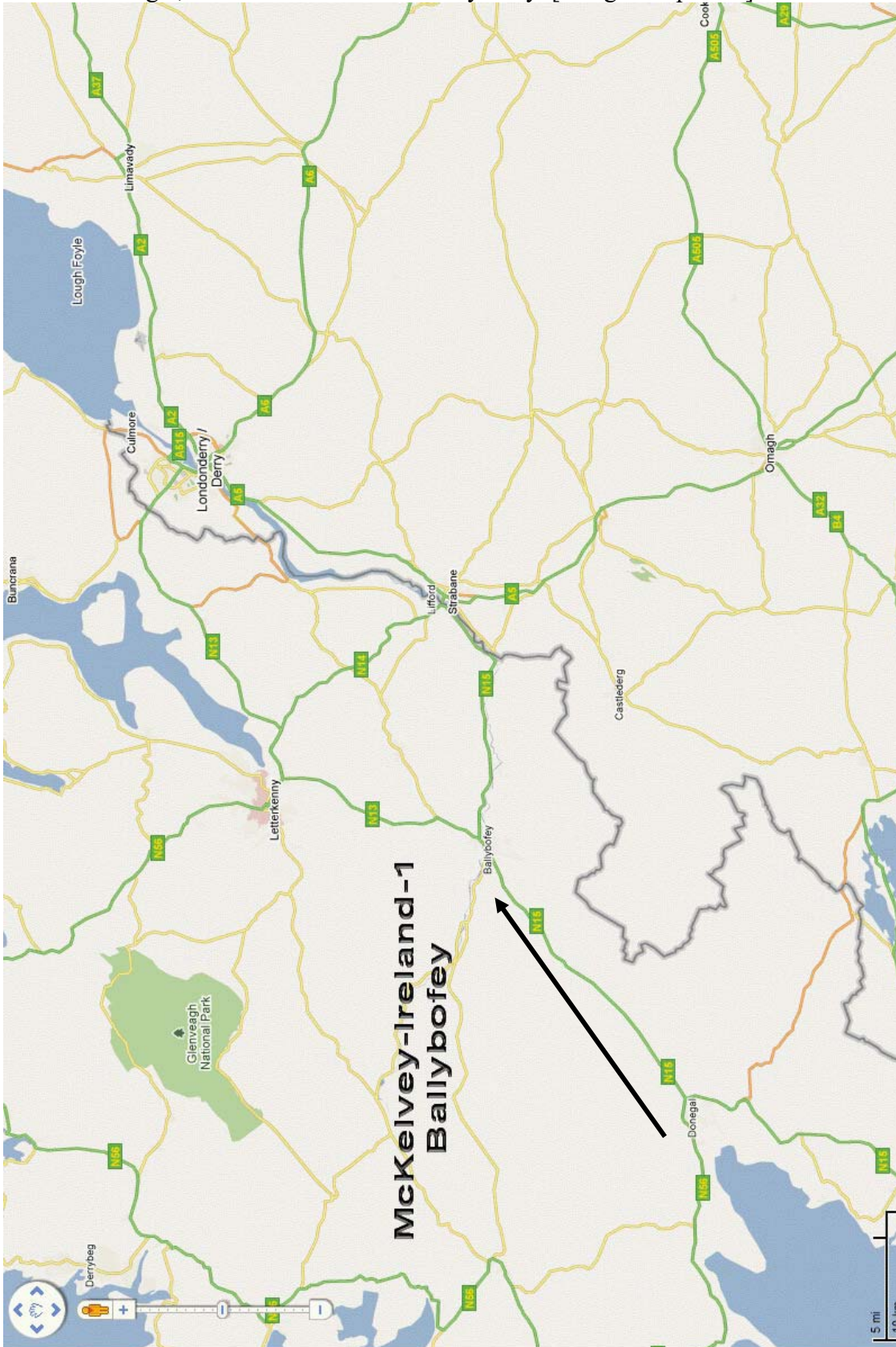
McKelvey Family Farm on Rushyhill near Killygordon Ireland

These Google maps show the location of the McKelvey family farm in Ireland. Eileen McKelvey Schield, Michael Schield and Milo Schield visited this farm Aug/Sept 1998. Start at Donegal in northwestern Ireland. [Google Map View]



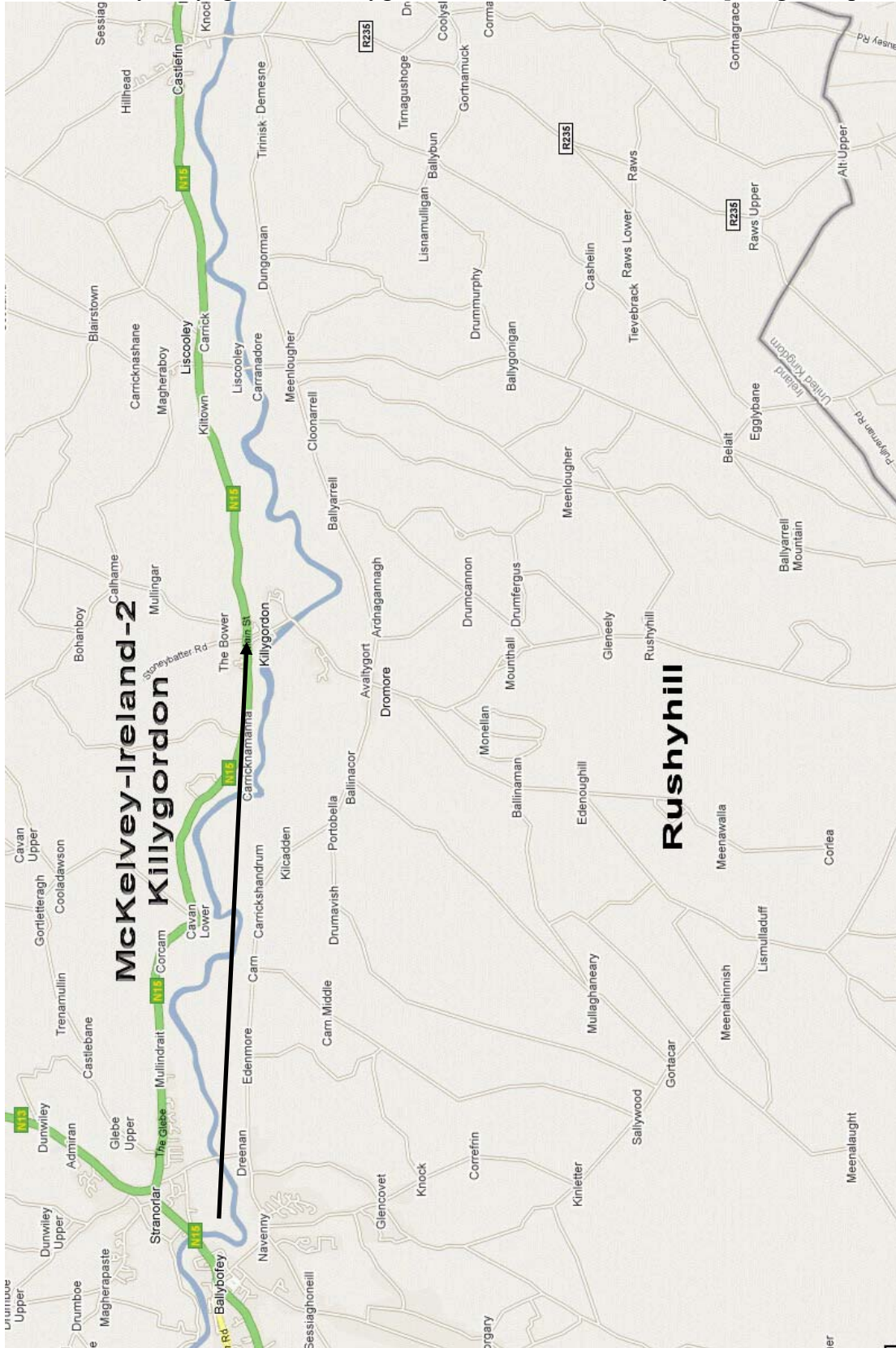
McKelvey Family Farm on Rushyhill near Killygordon Ireland

1. From Donegal, drive North on N15 to Ballybofey. [Google Map view]



McKelvey Family Farm on Rushyhill near Killygordon Ireland

2. From Ballybofey, go east to Killygordon on N15. Note Rushyhill. [Google Map view]



McKelvey Family Farm on Rushyhill near Killygordon Ireland

4. From Killygordon, go south to Rushyhill. [Google Satellite View with Show Labels]



McKelvey Family Farm on Rushyhill near Killygordon Ireland

5. Notice the roads around Rushyhill. [Google satellite view with Show Labels]



McKelvey Family Farm on Rushyhill near Killygordon Ireland

6. McKelvey family farm is 2nd on left coming from North. [Google satellite w. Labels]



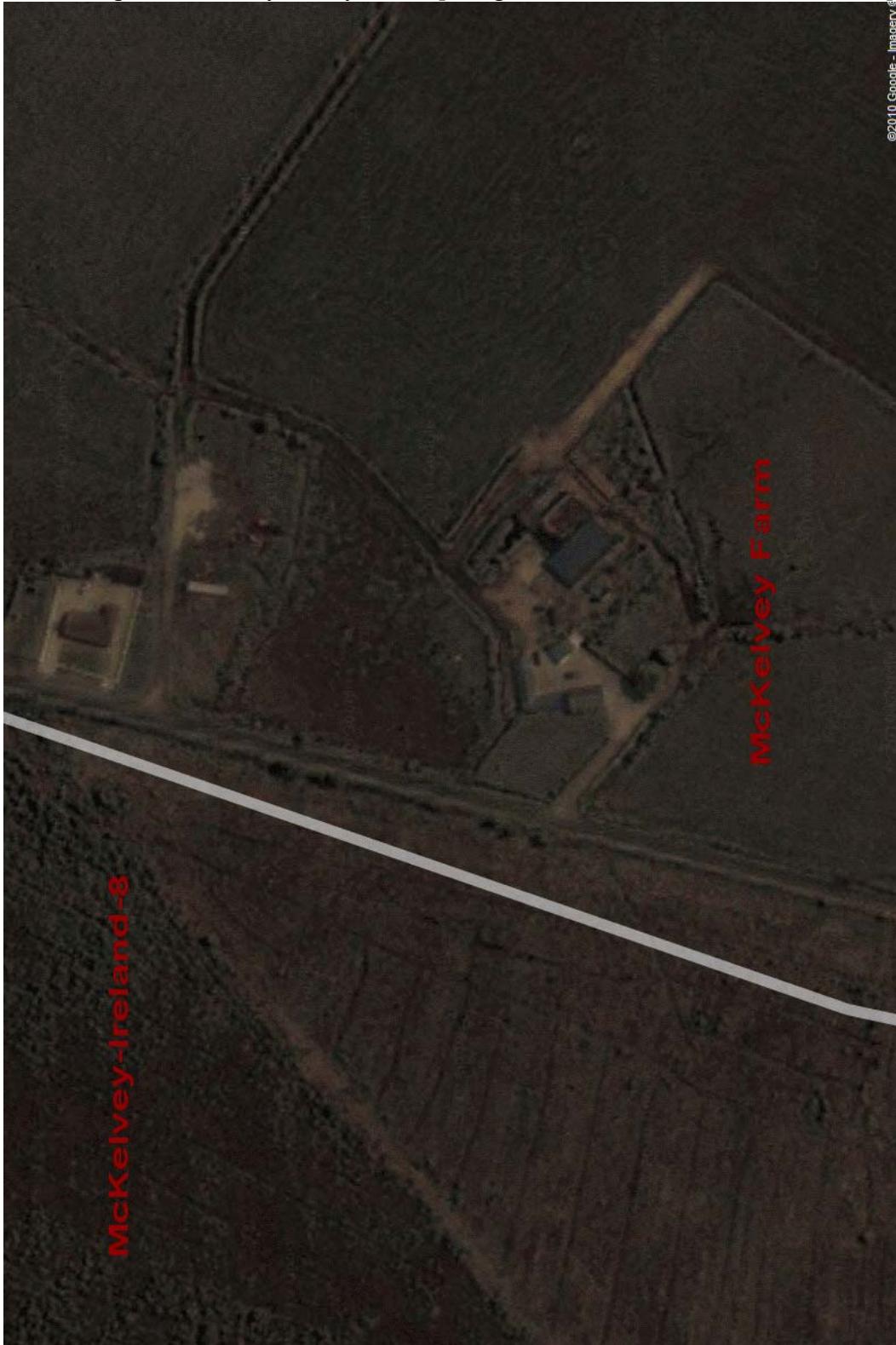
McKelvey Family Farm on Rushyhill near Killygordon Ireland

7. Zooming in on McKelvey family farm. [Google Satellite view with Show Labels]



McKelvey Family Farm on Rushyhill near Killygordon Ireland

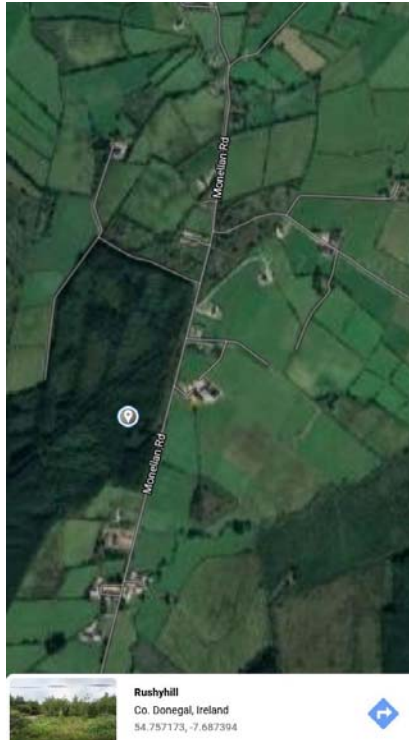
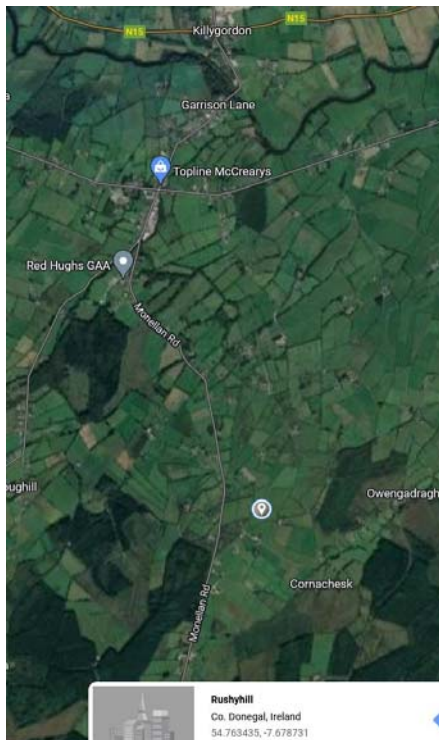
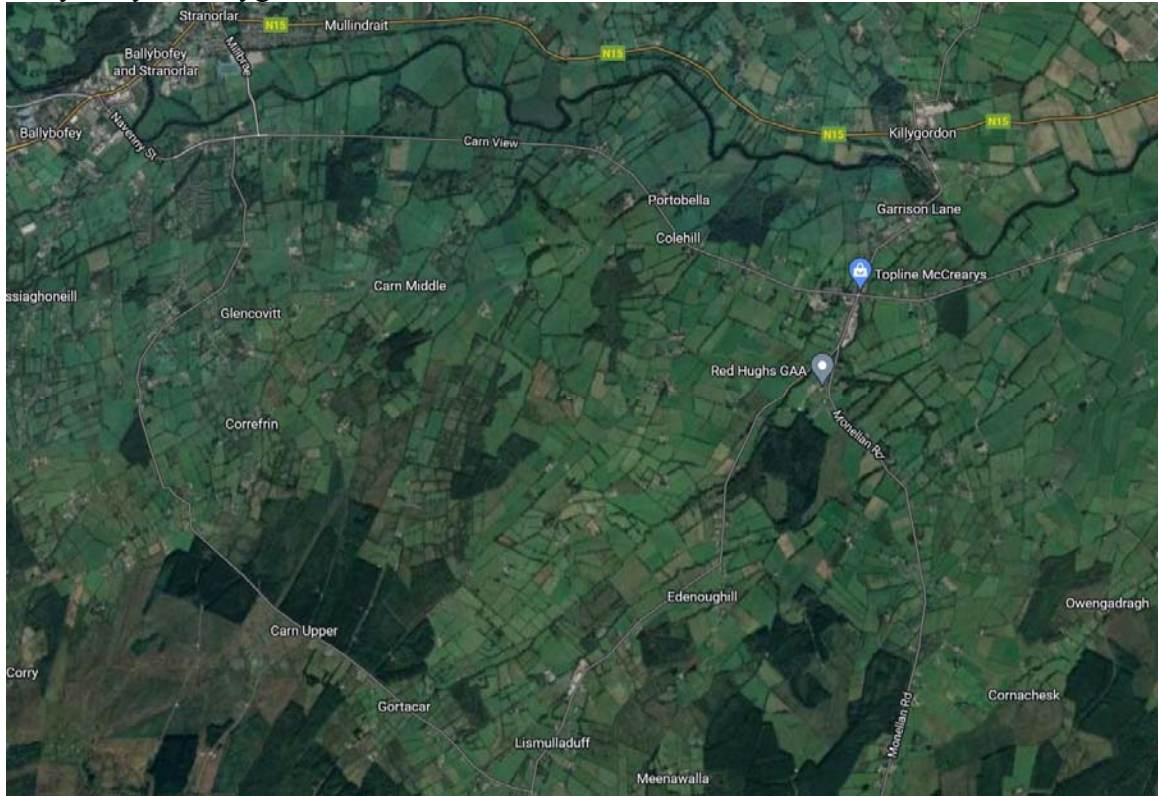
8. Close-up of McKelvey family farm. [Google Satellite view with Show Labels]



This presentation was created by Milo; reviewed and approved by Michael (6/13/2010). For details on the Schield-McKelvey genealogy or on the McKelveys living on or near the farm in 1998, contact Michael at mfschild@hotmail.com.

McKelvey Family Farm on Rushyhill near Killygordon Ireland

Google (3/2022) has new maps of the same area.
Ballybofey to Killygordon and south on Monellan Rd.



McKelvey Family Farm on Rushyhill near Killygordon Ireland

