

Eileen Bernice McKelvey Schield: Her Early Years

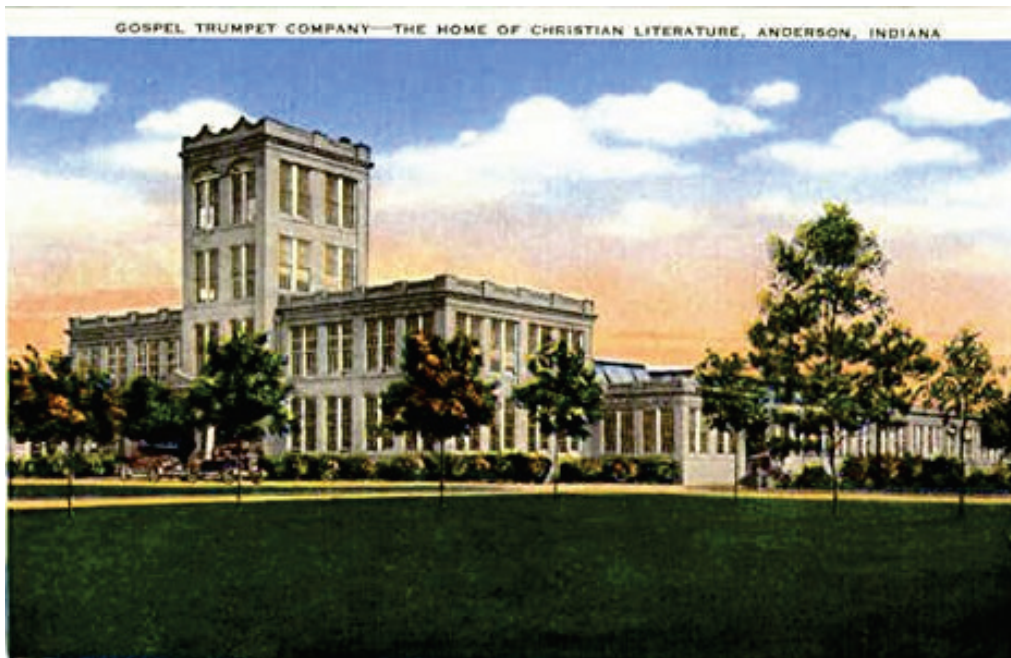
C: EILEEN'S EARLY YEARS IN ANDERSON

Anderson: In the midst of the depression, the Gospel Trumpet (the publishing arm of the Church of God Anderson) was in dire straits financially. They needed a manager who was financially trained yet fully immersed in the traditions of the church. AT Rowe (with his background in banking, evangelism, the ministry and publishing) was a top candidate. And so AT (along with his wife Ida and their son Tommy) moved from Pittsburgh, Penn. to Anderson Indiana. Here is how the Gospel Trumpet looked then:

The Gospel Trumpet was just across the street from Anderson College – the primary college of the Church of God Anderson. AT's close connection with Anderson College provided an opportunity for his granddaughter, Eileen, to go to college. And since Aunt Floie's husband, Ellery, was now deceased, Aunt Floie moved to Anderson along with Eileen. Floie worked in the



bindery of the Gospel Trumpet – the section in the back with the windows in the roof. AT's son, Tommy, had started at Anderson College a year before Eileen; Eileen and Tommy continued their long-time relationship. Here's another view of the Gospel Trumpet:



Eileen Bernice McKelvey Schield: Her Early Years

On Jan 1, 1936, Wilbur married Myra G. Cogswell. Myra died Jan 9, 1937 after giving birth to a daughter (died Jan 6). According to Milo, both Myra and Eileen had worked at the Gospel Trumpet.

The Gospel Trumpet owned the Anderson Home for Old Folks. [It has since been torn down.] It was located next door to the Gospel Trumpet. AT secured a place at this Old Folks Home for Floie and Eileen to live when they first moved to Anderson.



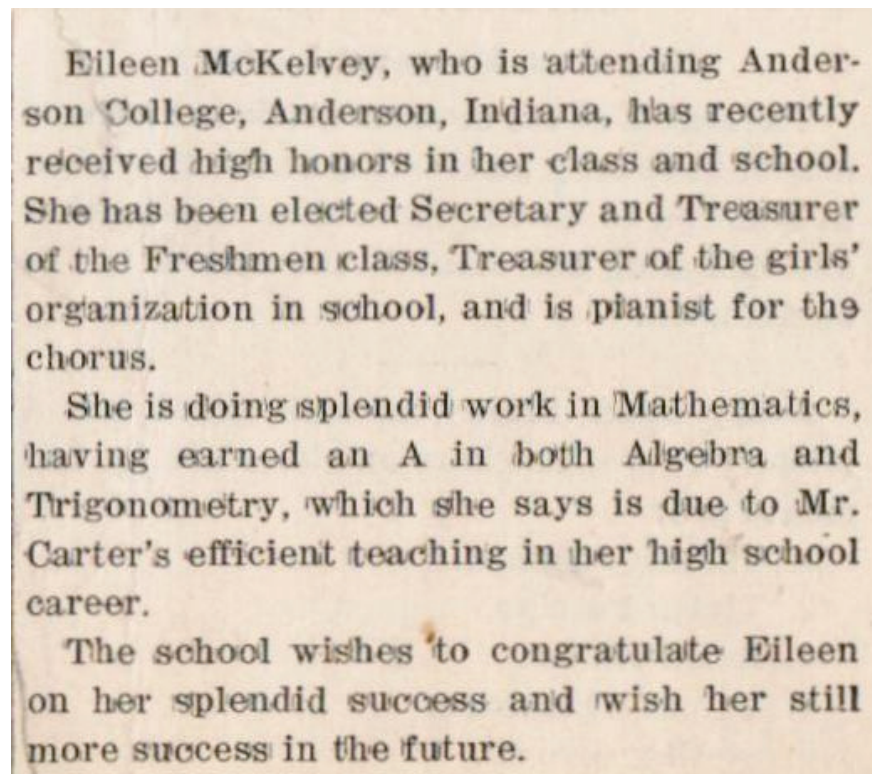
Anderson Old Folks Home



Anderson Park Place Church of God.

Living at the Old Folks home allowed Aunt Floie to have a very short walk to work; it allowed Eileen to have a very short walk to the campus of Anderson College. It allowed both of them a medium walk to the Park Place Church of God [no longer standing] for the Sunday services.

Eileen did well her first year at Anderson College. She certainly wasn't a wall-flower! Here's a report published by her high school newspaper.



Eileen Bernice McKelvey Schield: Her Early Years

Program. Eileen
 Song. -
 Announcements.
 Bernadine - Poems. Music. -
 Special Song - Ruth Sample.
 Prayer - Wendall Byrd.
 Special Song - Don Smith.
 Bernadine - Poems. -
 Congregational Song. Band of Perfectness.
 Offering. - Myron Gilbert.
 ushers. - Evans, Westlake.
 Special Song. - Tommy Rowe.
 Bernadine Poetry. -
 Hymn - New Year's Resolutions.
 Benediction. - Same M.

Program Tommy
 Song.
 Announcements.
 Bernadine. - Poetry.
 Special Song. Ruth Sample.
 Prayer. - Wendall Byrd.
 Special Song. Don Smith.
 Bernadine. - Poems.
 Cong. Song. Band of Perfectness.
 offering. - Myron Gilbert.
 Special Song. Tommy Rowe.
 Bernadine. - Poetry.
 N. Year's Resolutions.
 Benediction. Same.

With Tommy Rowe singing in the program, and Eileen having her own copy, it seems likely that Eileen was performing – probably playing the piano and/or organ. This could be Anderson (1936-40) when Eileen played the piano and organ in the original Park Place Church.

Do you often listen to music?
 We'll do it. To good music.
 Only the best. For it seems
 to be true as Auerbach once
 said, "Music washes away
 from the soul the dust of every-
 day life."

Loose sheets inserted
 in Clyde's 1943
 monograph.

Looks like Eileen's
 handwriting. Sounds
 like something Olive
 might say.

Lord, Give to me thy grace divine
 That through each coming day,
 My feet may ever keep the path
 That leads the upward way.

From the same sheet as the above. This looks like Eileen's handwriting. This prayer certainly illustrates a commitment to moral/spiritual self-responsibility and self-improvement.

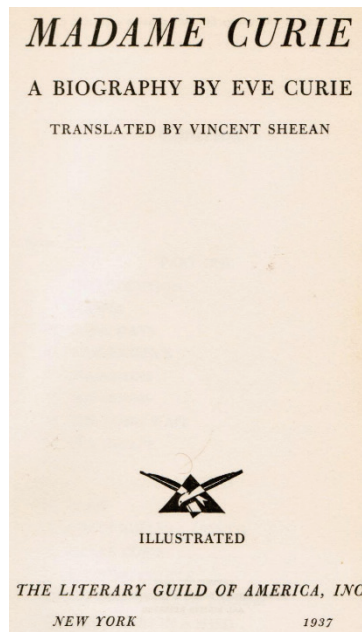
Eileen Bernice McKelvey Schield: Her Early Years

Eileen's grandparents supported her efforts in college. After she started college in Anderson, they gave her a copy of "Madame Curie" (the story of a famous Frenchwomen scientist) with this inscription:

To The Dearest, Sweetest
and Prettiest Granddaughter
Grandpa and Grandma Ross

Madame Curie is not a book on homemaking or child-rearing. It is about a woman who pioneered in a man's world and achieved greatness.

Eileen saved Aunt Toy's *Treasurers of Poetry* (1913). For excerpts, see www.StatLit.org/pdf/2013-Treasures-of-Poetry-GT-Byers-Johnson.pdf



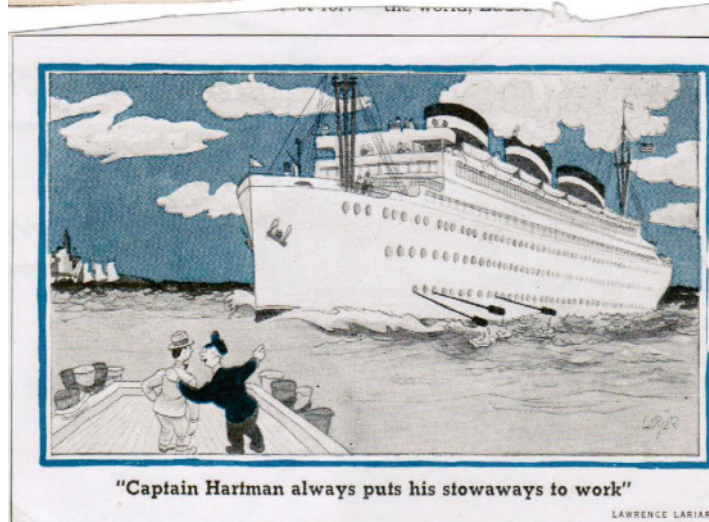
Of the loose things in Eileen's scrapbook, 24 were single-frame comics, six were poems of encouragement and admonition, and five were prayers or religious poems.

To the right are some of the comics she saved:

Eileen save this poem of encouragement: "There is need of the tiniest candle, as well as the garish sun; the humblest deed is ennobled, when it is worthily done. You may never be called to brighten the darkened regions afar; so fill for the day, your mission, by shining just where you are."

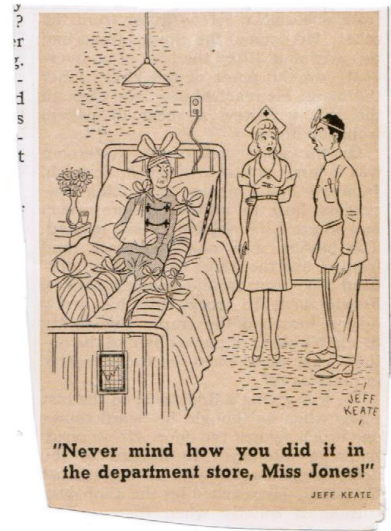
Another poem she saved titled "Forget": "The past distresses you, The blunder and the failures; Since now the deed you rue. Forget – look to the future. Oh, yes, confess the fault; And then yourself forgive; Worry avails you naught; Begin at once to live."

Mabel Lillian Sanders



Eileen Bernice McKelvey Schield: Her Early Years

Here are some more of the comics she saved:



Eileen Bernice McKelvey Schield: Her Early Years

This picture of Floie was taken in Anderson so it was taken during or after 1935. It could have been taken for Eileen's wedding (1938 at age 58) or for Floie's wedding to Yens (1947 at age 67).



Eileen Bernice McKelvey Schield: Her Early Years



Wilbur Schield and his bride, Eileen McKelvey were married on March 25, 1938 in Anderson Indiana. Wilbur was 29; Eileen was 19 (almost 20). It was near the end of Eileen's junior year. This event concludes this remembrance of Eileen's 19 early years.

Eileen Bernice McKelvey Schield: Her Early Years



Eileen Bernice McKelvey Schield: Her Early Years



Anderson, IN. Eileen Schield at cemetery near Anderson College in Anderson, Indiana.

Tombstone honoring AT. Rowe, Ida Byrd Rowe and Mabel Byrd: Ida's sister



Eileen Schield, Floie Welling, Olive Mong. Floie was Olive's aunt (sister to Olive's mother) and the second "mother" to Eileen (daughter of Olive). According to Bob Jr., the Mongs moved to this house in 1948. So this picture was taken in or after 1948.